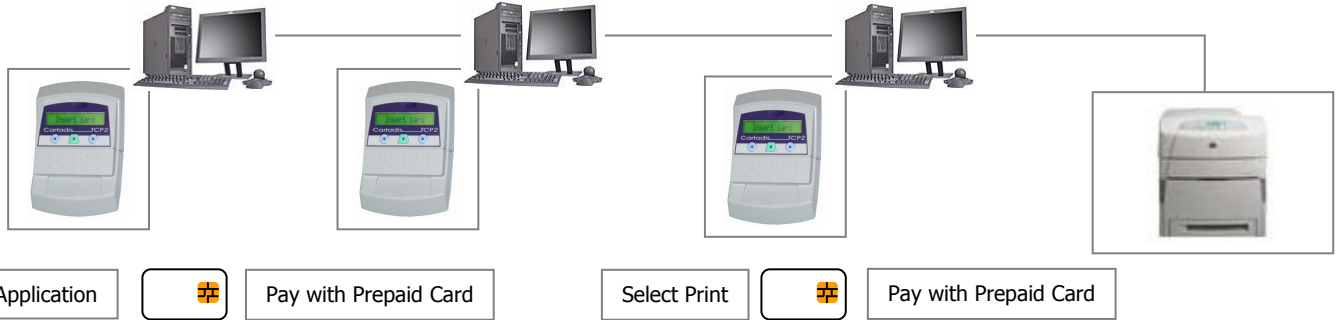


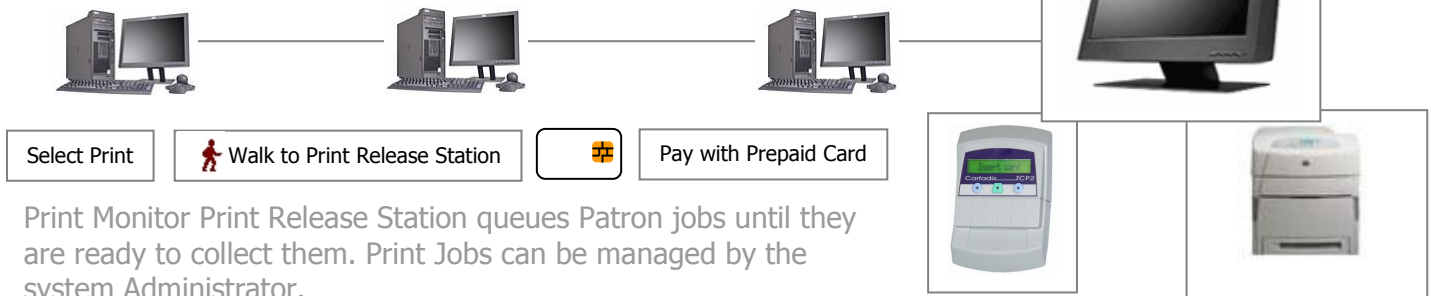
Copy, Print, Computer & Vending Control

Computer Manager with Print Monitoring



With Computer Manager and Print Monitor software you can charge for time on the computer and for prints made utilizing a prepaid smartcard or contactless mifare card (with option).

Print Monitor Print Release Station



Print Monitor Print Release Station queues Patron jobs until they are ready to collect them. Print Jobs can be managed by the system Administrator.

Photocopying, Vending Controllers and Card Recharging Options

TCP2



The TCP2 can be connected to photocopiers for the payment of copies. The TCP2 accepts payment of Copies with standard Cartadis Cards and mifare cards.

CR2



The CR2 is a fully automatic Note and Coin Card Recharging unit.

TDA3



The TDA3 can be connected to many makes and models of vending machine. In some cases they can be used to add value to the cards in addition to vending product.

Library Card Systems

General Principles

The **Cartadis Smart Card Readers** use a smart chip to store a prepaid value for use on prepaid services around the Library. Some of these services could include:



Computer Management:

- Charge for and Limit Use of Internet Access.
- Charge for Office Applications.
- Offer tiered pricing for Office and Internet access.
- Offer a range of Free Library Sites while charging for non-library related websites.

Printing:

- Charge for Prints completed on Printers compatible with PCL5, PCL6 and Postscript languages
- Digital and Analog Copiers
- Multifunction printers/photocopiers
- Options of either Pay then Print (requires card reader on each PC) or
- Print then Pay (requires a Print Release Station with Card Reader)

Photocopying:

- Charge for A4, A3, Black and Colour at variable rates.
- Options of Coin or Card or Coin and Card.
- Charge for photocopying on most makes of Multifunction printer/copiers

Cards

The Cartadis TCP Smart Card System can utilize either the standard Prepaid Smart Card or a mifare card with option.

Cards:

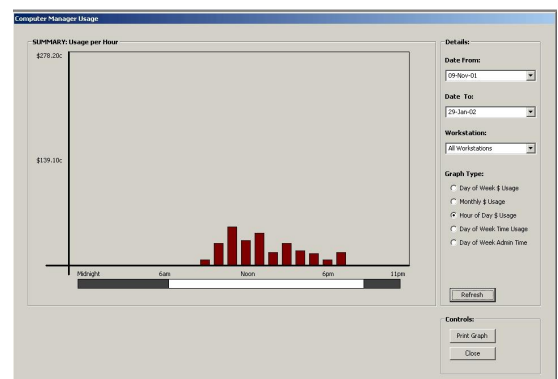
- Reloadable Cards - Ideal as Library Membership Cards these cards can be reloaded many times.

Management & Reporting

All statistics are stored within the prepaid card terminals. In addition for Printing and Computer management statistics are stored for reporting in an Access Database.

Graphs:

- Day of Week Dollar Value Usage.
- Monthly Dollar Value Usage.
- Hour of Day Dollar Value Usage.
- Day of Week Time Usage
- Administrator Usage Time.
- Graphs show Time and Print Usage.



Example of Time of Day Usage Graph