



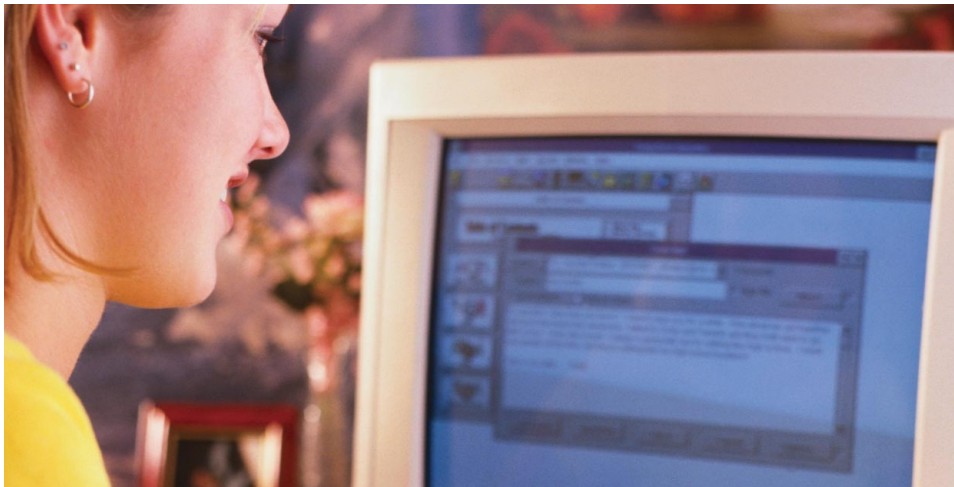
SignUp Vx3

Please your patrons, save your staff

You're in a tight spot.

Patrons monopolize your Public Access Computers (PACs) for hours—lost in a world of information, chat, and games. The result is that you're left with frustrated patrons waiting in lines for computer time and an unhappy staff that is forced to coordinate a fair computer schedule. Of course, while your staff is busy mediating between patrons and scheduling computer time, they can't concentrate on the activities they were trained to perform.

Pharos Systems helps you overcome these challenges with SignUp Vx3, an automated computer reservation and management system that provides effective and fair access to all patrons, optimizes the use of your existing resources, and allows your staff to focus on their core tasks—the tasks that lead to improved library services.



Pharos SignUp—fair, easy, and powerful

The solution begins at conveniently located SignUp Stations, where patrons swipe their library cards or enter their ID numbers at the keyboard to initiate the 3-step reservation process. A simple, intuitive interface guides users effortlessly through the reservation screens, so even "low-tech" patrons can reserve PACs without having to ask for assistance.

When the reserved time begins, patrons swipe their library cards/enter their ID numbers at the PAC to ensure that only they are able to access the computer. Guest cards with limited access are available to patrons without library cards.

When the reserved time is about to expire, SignUp first notifies, and then gracefully logs the patron off. So without any arguments or claims from patrons that your staff is being unfair, the PAC is available for the next reservation. If patrons need more time, SignUp is intelligent enough to extend their time if no one else is waiting for the PAC—or patrons may repeat the simple reservation process.



Automated access to PACs satisfies patrons because they can serve themselves without feeling like they've been treated unfairly, and satisfies your staff because they are no longer burdened with policing computers and dealing with frustrated patrons.

"Implementing the Pharos software has made a tremendous difference to us. Patron access to the Internet is much more orderly and fair... and Pharos has enabled our staff to spend more time helping patrons find information."

Audrey Betcher, Director, Rochester Public Library



Pharos Systems –

A worldwide network of Pharos-certified Value Added Resellers, System Integrators, and Desktop and Output Outsourcers customize Pharos software solutions to meet and exceed your unique requirements—with minimal involvement from your IT staff. In a short time, your individualized solution is up and running, working side by side with your existing technology without disrupting your current systems and workflow. If any technical issues occur, Pharos Web and phone support enable us to successfully support companies in over 20 countries worldwide.

SignUp features and benefits

- **Strict enforcement** – patrons are first notified, then automatically logged out of PACs at the end of their reservation. Administrators can end patron sessions at any time.
- **Control centrally, customize locally** – SignUp lets you set up controls that are applied to the entire library system. At the same time, you can allow individual branches to customize system settings to meet unique needs. If desired, settings can even be customized for each individual computer.
- **Maintain simple operational control** – an improved “Nerve Center” provides a central point of complete day-to-day operational control. You are able to make and modify reservations at any time, enforce compliance with library rules, extend time limits, view queues, and disable PCs if necessary.
- **Versatility is key** – Immediate, scheduled, and queued SignUp reservation modes—which can be used together or separately—enables each individual branch to configure the system to best meet its needs.
- **Standby reservations** – allows patrons who are flexible about the amount of time they have on a computer the possibility of getting a PAC quicker.
- **Block reservations** – allows staff members to reserve a cluster of computers for group activity, and to make this a recurring reservation.
- **Extensive reporting** – provides instant, accurate data so you can see how your PACs are being used and by whom.
- **Fits right in** – SignUp seamlessly interfaces with the major Internet filtering software to provide localized, centralized, or group-based filtering options.
- **Ensure common experiences** – support of Deep Freeze software means you can set SignUp workstations to refresh to a predetermined desktop configuration after easy use—so each new patron begins with the same desktop, even if the previous patron customized it.
- **Setting flexibility** – allows administrators to customize settings such as hours of operation, public holidays, reservation duration, reservation extension rules, and patron usage limitations.
- **Auto power-off** – automatic shutdown keeps librarians from having to turn off SignUp-controlled PCs individually.
- **Integration gateways** – easily connect to your Patron Database and other external data sources such as authentication systems, library automation systems, and other back-office systems.
- **Future functionality** – extend or change the functionality of the software using plug-ins and your favorite programming language.
- **Flexible restrictions** – sets permissions at the desktop level, enabling secure environments for children without restricting adults.
- **Operate with peace of mind**– support of Microsoft Cluster servers ensures SignUp remains up even if a server goes down.

- Client Workstations Supported
 - MS Windows XP Professional, 2000, NT 4.0, Me, 95/98
 - Mac OS X 10.3
- Supports TCP/IP Networks
- SignUp Reservation Modes
 - Walk-Up/Immediate Bookings
 - Queued Bookings
 - Scheduled Bookings (Web or Local)
- SignUp/Database/Web Server Requirements
 - Pentium III+
 - Windows 2000, NT 4.0 Server, 2003
 - 512+MB RAM and 6+GB disk space
 - Web Server: IIS 4 and above

- SignUp Station Requirements
 - Pentium I+ or Celeron
 - Windows XP Professional, 2000, NT, Me, 98, 95
 - 64+MB RAM and 100+ MB disk space
 - Databases Supported
 - Microsoft MSDE¹
 - Microsoft SQL Server 2000 and 7.0
 - Reports
 - 15 Standard Reports
 - RTF, HTML, CSV, MSeXcel, MSWord
 - User Customizable reports²
- ¹ Included on Pharos SignUp Vx CD-ROM free of charge
² Requires licensed copy of Crystal Reports

- LMS/Patron Database Support
 - SIRSI/DRA, III, GEAC, Dynix, epixtech, Pinnacle
 - SIP1, SIP2, ODBC compliant systems
- Card Types Supported
 - Magnetic Stripe
 - Bar Code
 - Smart Cards
- Authentication
 - Microsoft Windows NTDS, ADS
 - Username/Password/PIN
 - LMS (see above)
 - LDAP
- Melinda & Bill Gates Foundation approved application

